

7.1.7. Measures for Barrier Free Environment

A) Ramps and Rails



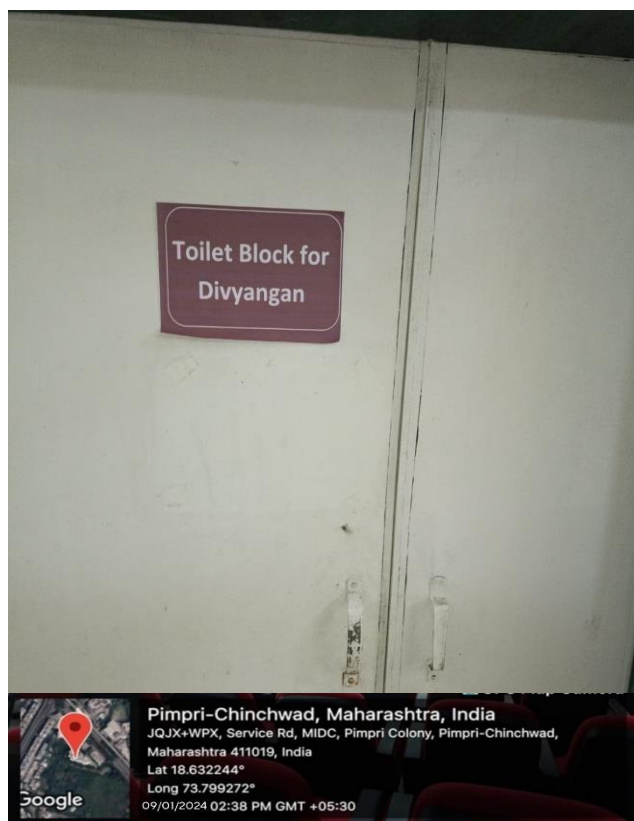
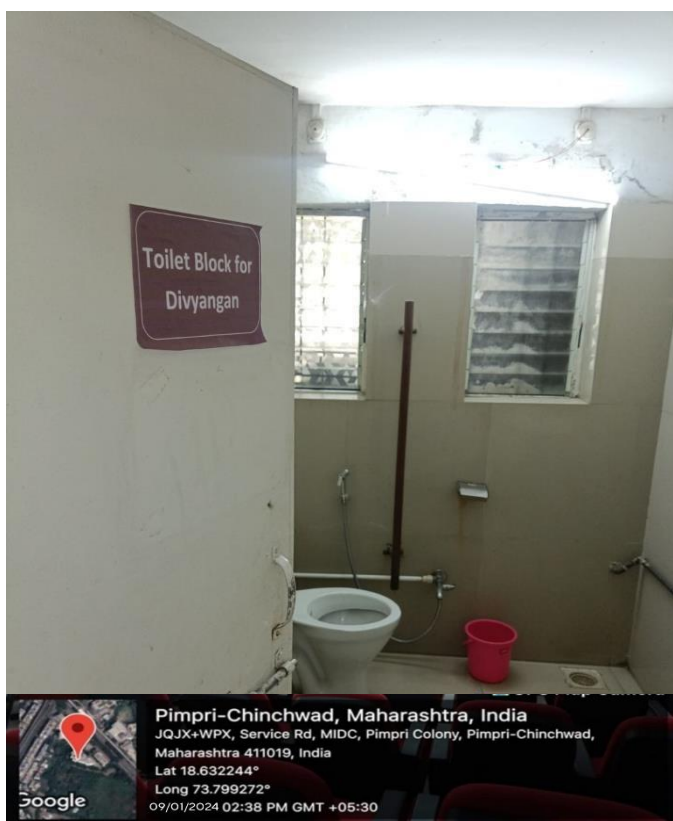
Director
ASM's IPS

B) Passenger Lifts



Director
ASM's IPS

C) Specially designed Toilet block for Divyangan:

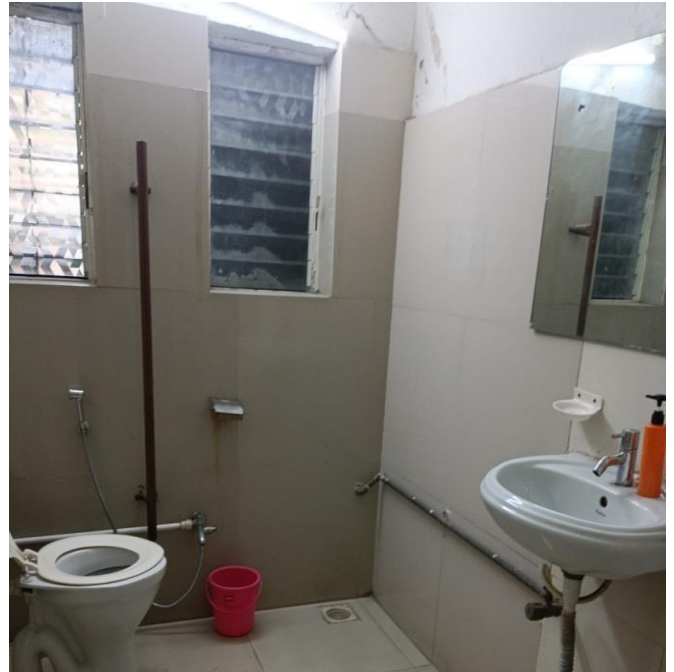


Director
ASM's IPS



Audyogik Shikshan Mandal's
(Society Regd. No. Maharashtra/1330/Pune 83; Public Trust No. F-2451/Pune 83)
INSTITUTE OF PROFESSIONAL STUDIES (IPS)

(Approved by AICTE, Govt. of India & affiliated to University of Pune)
AICTE CODE : 1-4240185 DTE CODE : MB6166 AISHE CODE : C-46639



 **Pimpri-Chinchwad, Maharashtra, India**
JQJX+WPX, Service Rd, MIDC, Pimpri Colony, Pimpri-Chinchwad,
Maharashtra 411019, India
Lat 18.632244°
Long 73.799272°
09/01/2024 02:38 PM GMT +05:30

 **Pimpri-Chinchwad, Maharashtra, India**
JQJX+WPX, Service Rd, MIDC, Pimpri Colony, Pimpri-Chinchwad,
Maharashtra 411019, India
Lat 18.632244°
Long 73.799272°
09/01/2024 02:38 PM GMT +05:30



Director
ASM's IPS

D) Wheelchair for Divyangyan available at reception:



Director
ASM's IPS